

Qualification program on **Sustainability Management**

Roadmap to a circular economy

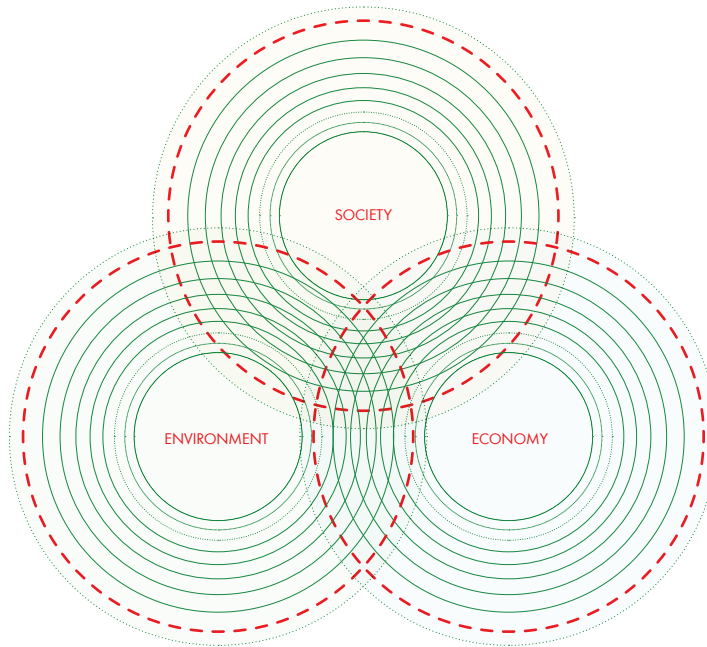
WHAT IS SUSTAINABILITY?

“Sustainable development is development that meets the needs of the present without compromising the ability of future generations to meet their own needs.”

BRUNDTLAND REPORT “OUR COMMON FUTURE” OF THE WORLD COMMISSION ON ENVIRONMENT AND DEVELOPMENT OF THE UNITED NATIONS, 1987

Sustainability is based on **three interdependent pillars** that must all be taken into account equally: environment, economy, and society. All three pillars are equally important.

The **Sustainability Management** qualification program addresses the most prevalent strategies for implementing sustainable systems. The program’s main emphasis is on circular economy.



ENVIRONMENT

Using resources much more efficiently—aiming at the continual use of resources in circular systems. With regard to ecological sustainability, a considerate and farsighted use of natural resources is of central importance.

SOCIETY

Social sustainability focuses on society as a whole, dealing with aspects such as fair business and operating practices, consideration of employee, customer and company needs as well as responsibilities along the supply chain.

ECONOMY

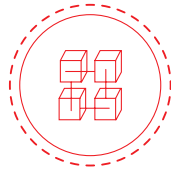
Economic sustainability aims to establish a circular economic system and to secure a company's survival in the long term. Profit maximization must be in line with all pillars of sustainability.



CONTENTS



PRACTICE-ORIENTED
KNOWLEDGE ON DEMAND



DIDACTICS



NEEDS-BASED AND
INDIVIDUAL



ROOMS



CREATIVE, FLEXIBLE
LEARNING LANDSCAPES



ROLES



NETWORK OF
FLEXIBLE ROLES



MOTIVATION



MORE FLEXIBILITY,
CREATIVITY,
BOOSTS MOTIVATION

OBJECTIVE

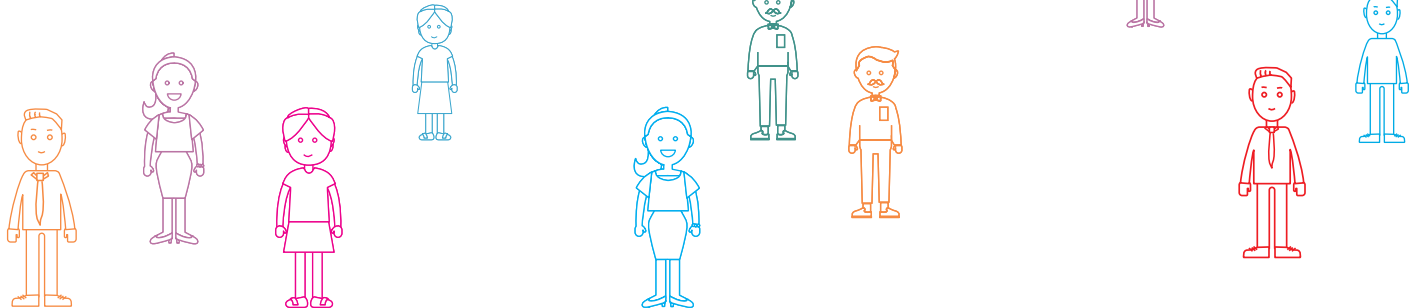
The Sustainability Management qualification program promotes critical thinking, provides an overview of all dimensions of sustainable economic activity and enables you to translate what you have learned into practical approaches for your field of work. The program encourages you to implement a sustainable, circular value-creation process, pointing out the benefits of the associated changes.

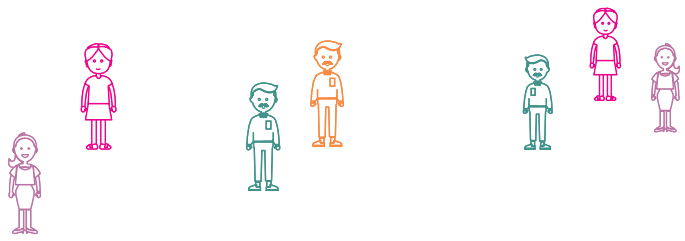
“Education for sustainable development aims to encourage responsible thinking and action.”

FEDERAL MINISTRY OF EDUCATION AND RESEARCH

TARGET GROUP

The Sustainability Management qualification program is open to all people interested. The modular structure allows choosing the right combination of modules depending on the participants' previous knowledge and fields of work.





SUPPLIERS AND
BUSINESS PARTNERS



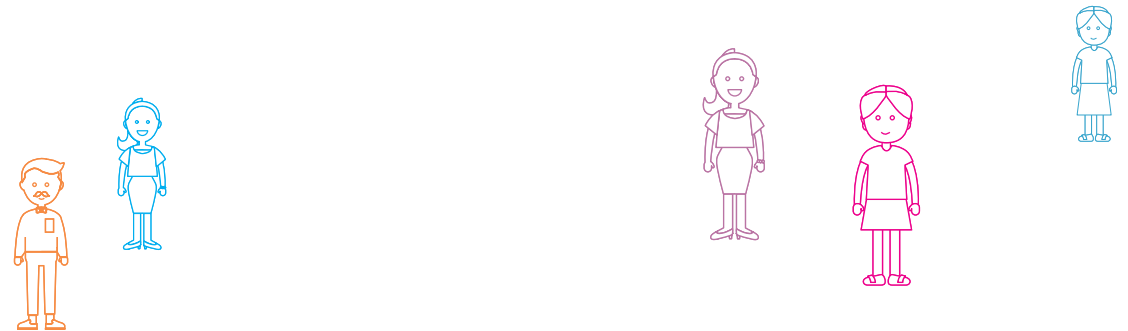
CUSTOMERS



EMPLOYEES



MANAGEMENT



STRUCTURE OF THE QUALIFICATION PROGRAM

The Sustainability Management qualification program consists of three modules and can therefore be adapted flexibly and individually to different qualifications:



MY JOURNEY TO ATTAINING MY QUALIFICATION GOALS

A red dashed line graphic that starts horizontally and then curves upwards and to the right, ending near the right edge of the slide.

1

BASIC MODULE 2 DAYS

In the basic module, you will gain a general understanding of the term “sustainability” and learn more about the various sustainability concepts, challenges and conflicting goals in sustainability management as well as economic framework conditions. You will become acquainted with various sustainable strategies and economic methods.

 INTRODUCTION TO SUSTAINABILITY AND CIRCULAR ECONOMY 

- ▶ Sustainability: Definition and origin of term
- ▶ Challenges of our times
- ▶ Sustainability concepts and models
- ▶ Sustainability strategies and their interrelations: efficiency, sufficiency, and consistency
- ▶ Corporate responsibility and sustainability management
- ▶ Economic framework conditions
- ▶ Circular economy
- ▶ Overview of advanced modules
- ▶ Sustainable management tools (e.g. life cycle analysis, emission assessment, Global Reporting Initiative (GRI), relevant sustainability KPIs, etc.)

You may choose among the advanced modules according to your main interest or emphasis of work. Participation in any advanced module requires completion of the basic module or comparable knowledge. Completing all the modules, you will not only gain an insight into the sustainability models within a corporate unit, but also gain an overview of all important spheres of action of sustainability.

2

ADVANCED MODULES 1 DAY EACH



SUSTAINABLE CONSTRUCTION

- ▶ Certifications in construction
- ▶ Non-toxic interior construction
- ▶ Building biology
- ▶ Energy concepts
- ▶ BIM
- ▶ Building life cycle



SUSTAINABLE SUPPLY CHAIN MANAGEMENT

- ▶ Sustainable procurement
- ▶ National, European and international standards
- ▶ Supplier evaluation options and Supplier Code of Conduct
- ▶ Procurement law



SUSTAINABLE LOGISTICS

- ▶ Logistics processes in a globalized economy
- ▶ Logistics problems
- ▶ Reduction of transport emissions
- ▶ Emission calculation



CIRCULAR PACKAGING MANAGEMENT SYSTEMS

- ▶ Packaging seen from a customer's perspective
- ▶ Packaging types and materials
- ▶ Regulatory framework
- ▶ Packaging material white lists
- ▶ Design criteria and design guides

Are you interested in the advanced modules?
Further information can be found online:



COMMUNICATION, CHANGE
MANAGEMENT, AND CON-
TROLLING



BUILDING TECHNOLOGY AND
BUILDING IMPACT



SUSTAINABLE
PRODUCT DEVELOPMENT



SUSTAINABLE FINANCES

- ▶ Legal and economic prerequisites and requirements
- ▶ Controlling and documentation framework
- ▶ Translating sustainability criteria into management criteria
- ▶ Key figures and management systems
- ▶ Certification and labels

- ▶ Challenges and limitations of technical building equipment
- ▶ Technical building equipment: value-adding construction
- ▶ C2C® roadmaps as planning tool
- ▶ Design-sprint prototyping
- ▶ Digitalization as an opportunity for the planning process


- ▶ Cradle to Cradle®
- ▶ Biological and technical cycle
- ▶ Material health
- ▶ Suitability for circular economy
- ▶ CO₂ footprint
- ▶ Safe and circular design
- ▶ Comparison to other methods

- ▶ Preparation of a sustainable business strategy
- ▶ Bonds involving sustainable components
- ▶ Sustainable lending
- ▶ Sustainable capital investment
- ▶ Non-financial reporting (EU-NFRD)
- ▶ Impact on business value
- ▶ Corporate climate management

3

CONCLUDING MODULE 1 DAY

TEST AND EXCHANGE



Complete our qualification program on sustainability management by taking a final test. Requirement for taking the test is participation in all advanced modules.

Participants in the program are given the opportunity to regularly exchange their views and ideas with each other. They can thus grow relevant knowledge and expertise, helping them to contribute lastingly to a sustainable development.

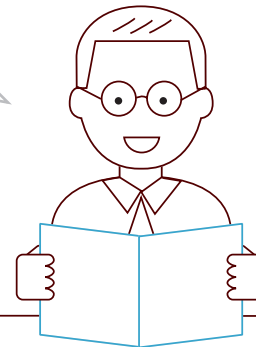
ARE YOU INTERESTED IN THE SUSTAINABILITY MANAGEMENT QUALIFICATION PROGRAM?

Get more detailed information and register online at
www.wuerth.de/akademie_entwicklung.

Are you an employee of the Würth Group? Check out the interesting contents of Learning
Campus at <https://lms.witglobal.net>.



#unsereVerantwortung



THE WORLD OF AKADEMIE WÜRTH

Would you like to improve your skills and professional knowledge? Do you wish to discover and utilize your untapped potential?

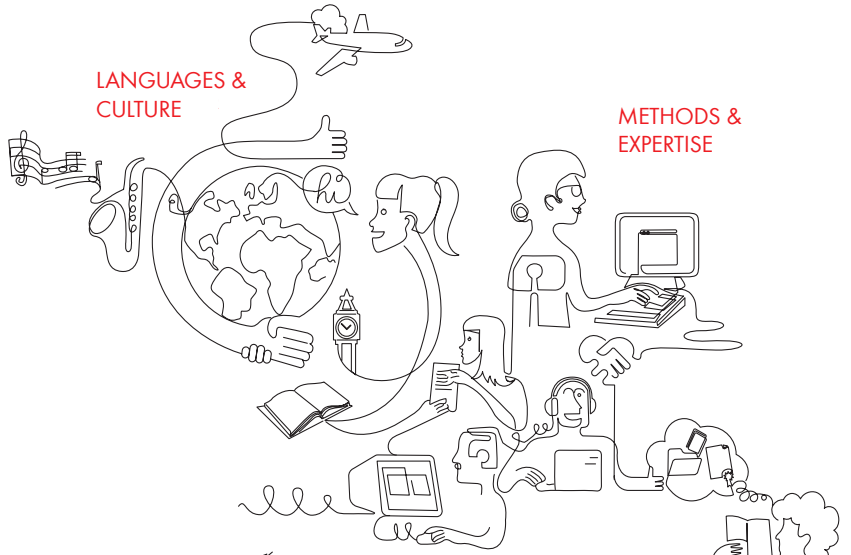
Our end-to-end training strategy helps you to obtain further professional training, personal or technical coaching or strategic consulting services. All of our activities always happen with a focus on individual targets and challenges.



Discover our entire training range
online at www.wuerth.de/akademie.

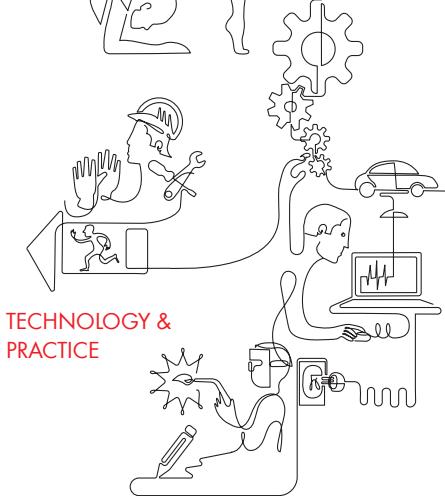


PREVENTION & HEALTH



LANGUAGES & CULTURE

METHODS & EXPERTISE

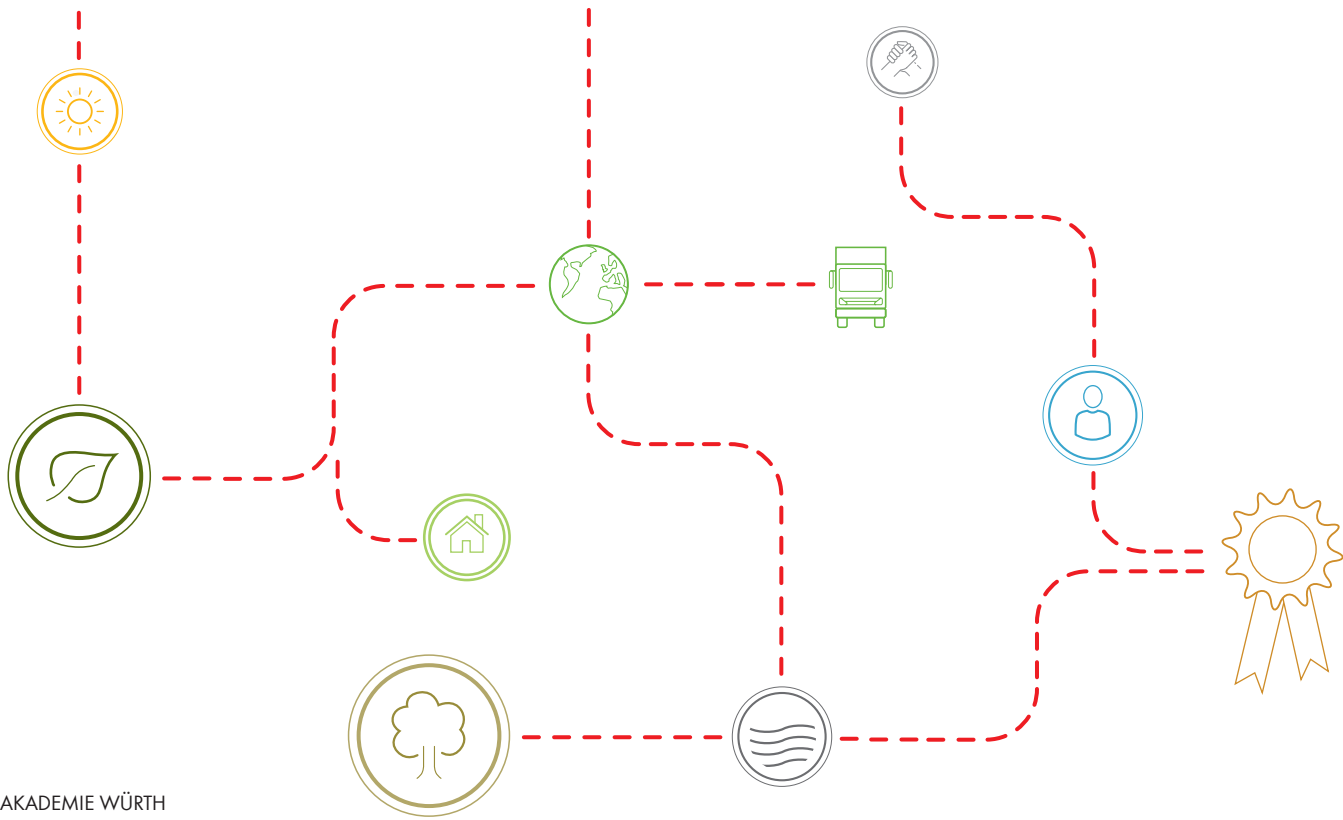


TECHNOLOGY & PRACTICE



LEADERSHIP & PERSONALITY

MANAGEMENT SYSTEMS



AKADEMIE WÜRTH
Reinhold-Würth-Straße 12-17
74653 Künzelsau-Gaisbach
+49 7940 15-2330
akademie@wuerth.com
www.wuerth.de/akademie

Our general terms and conditions apply. Find them
online at www.wuerth.de.

www.wuerth.de/akademie